

Live the life you so
richly deserve.



new way to feel more at home.

In many ways, life at Somerby Mount Pleasant is just what you would imagine. Spacious apartments. A caring staff. The beautiful, South Carolina surroundings. But it only takes a slightly deeper look to discover that it offers all those things and so much more.

Somerby Mount Pleasant is operated by Bridge Senior Living, which means we go beyond the expected. We strive to care more. To innovate more. To inspire more. All to help you create a lifestyle that is as abundant and fulfilling as you dare to dream.





The beauty of South Carolina inside and out.

Somerby Mount Pleasant is tucked in a tree-lined enclave in idyllic Mount Pleasant, just a bit northeast of Charleston. But its location is just as convenient as it is peaceful, so you're never far from whatever you want – be that a relaxing night at home, a stroll around our fishing pond, or an evening show in town.

Where are we?

3100 Tradition Circle
Mount Pleasant, SC 29466
866-531-5123



IMAGES OF THE MOUNT PLEASANT, SC SURROUNDING AREA



IMAGES OF THE MOUNT PLEASANT, SC SURROUNDING AREA



A sanctuary for every season.

On the journey of life, we sometimes get to choose our paths, and sometimes we encounter unexpected detours that lead to new adventures.

As a Bridge Senior Living community, Somerby Mount Pleasant helps create rewarding lifestyles for all our residents. With Independent Living, Assisted Living, Memory Care, Therapy, and Respite Care options, along with round-the-clock expert health services and support, life here always fosters a sense of serenity, safety, and satisfaction.



Independent Living

Home is where the heart is and the hard work isn't.

Whether you call it maintenance-free, worry-free, or stress-free, the key word in all those descriptions is “free.” Because that’s what Independent Living at Somerby Mount Pleasant is all about – giving you freedom from the worry and responsibility of house ownership, and the freedom to do, well, whatever you like.

A few features of Independent Living at Somerby Mount Pleasant include:

- *Full-service dining facilities with chef-prepared meals, including a daily breakfast buffet and Sunday brunch*
- *Weekly – and thorough – housekeeping*
- *The peace of mind of knowing that daily assistance is just moments away*
- *Arranged transportation for shopping and appointments off-site*
- *Activities, events, and programs that you’re sure to enjoy*

We offer eleven Independent Living floor plans, ranging from 1-bedroom/1-bath to 3-bedroom/2-bath apartments and 2-bedroom/3-bath villas.

All are quite spacious, so there's always plenty of room for friends and family to gather.

Starting at \$3,700

All apartments include:

- *Individual thermostat controls*
- *Modern kitchens with full-size appliances*
- *Washers and dryers in each apartment*
- *Utilities (electricity, water, telephone)*
- *Housekeeping*
- *Trash service*
- *Pest control*
- *No property taxes*

If you think moving in means leaving your furry loved one behind, it doesn't. All apartments at Somerby Mount Pleasant are pet-friendly.



The Admiral

562-750 sq. ft. — 1 Bedroom/1 Bath



Independent Living

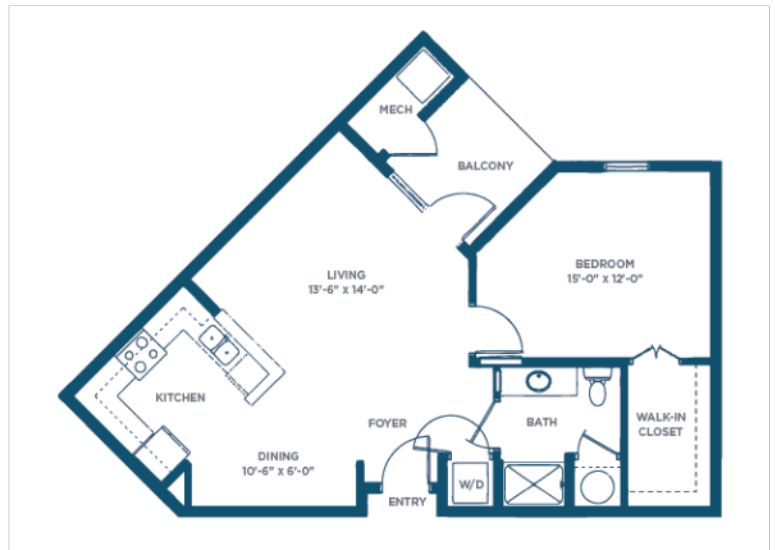
The Ashley

651-665 sq. ft. — 1 Bedroom/1 Bath



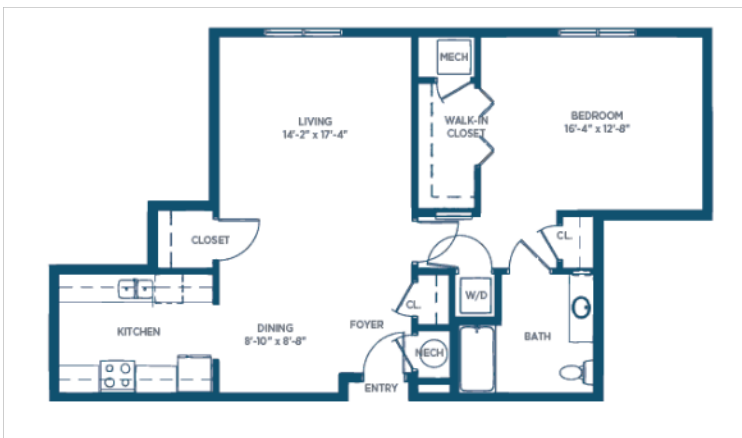
The Berkeley

803 sq. ft. — 1 Bedroom/1 Bath



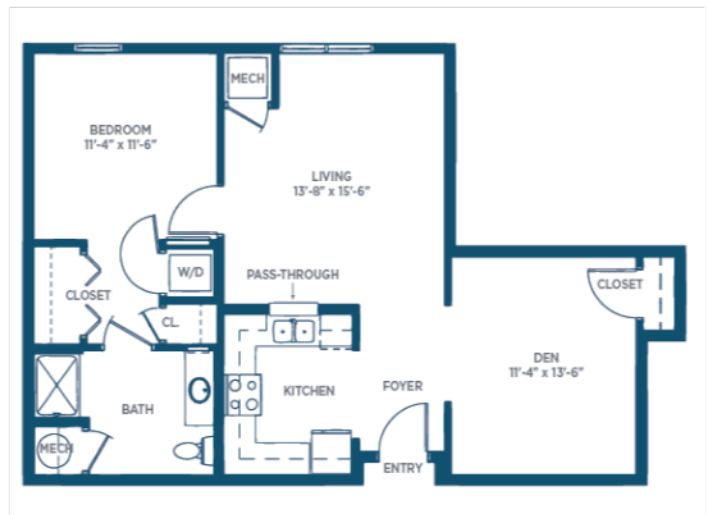
The Brigadier

966-1,019 sq. ft. — 1 Bedroom/1 Bath



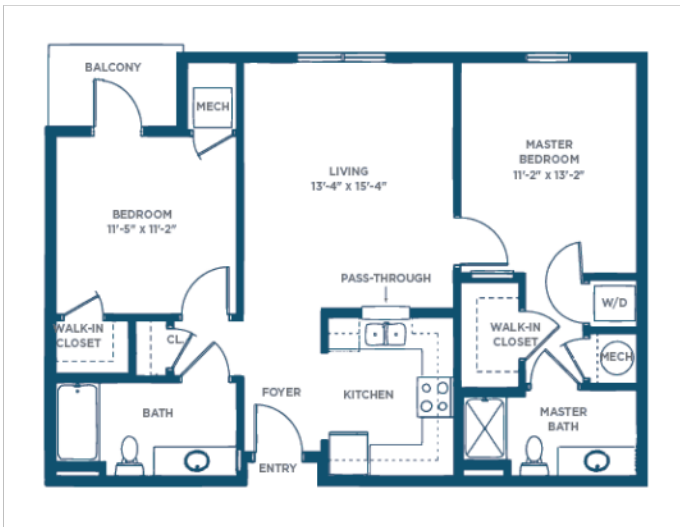
The Charleston

811-904 sq. ft. — 1 Bedroom/1 Bath



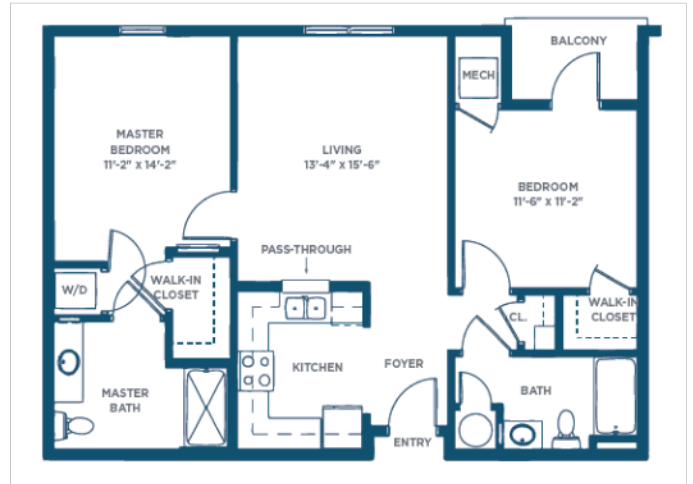
The Citadel

985 sq. ft. — 2 Bedroom/2 Bath



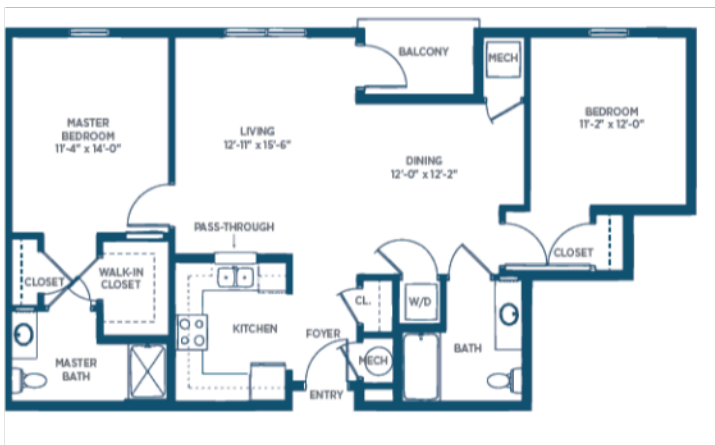
The Desoto

980-1,018 sq. ft. — 2 Bedroom/2 Bath



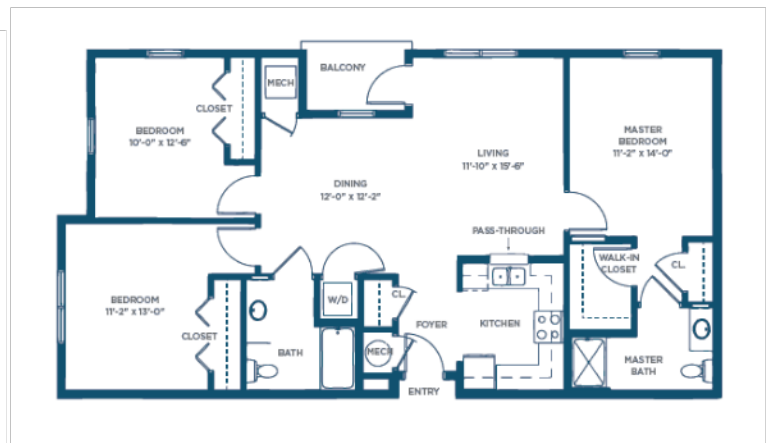
The Florentia

1,159-1,200 sq. ft. — 2 Bedroom/2 Bath



The Grand

1,342 sq. ft. — 3 Bedroom/2 Bath



Independent Living

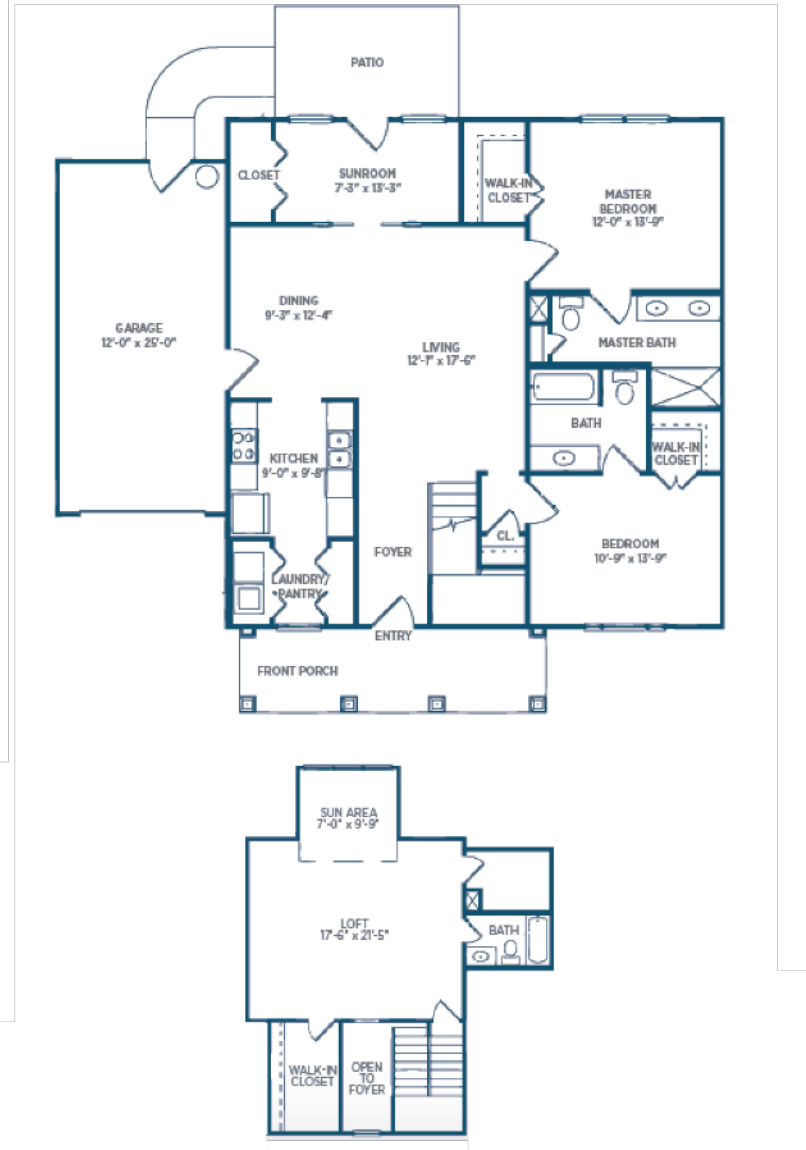
The Atlantic

1,334 sq. ft. — 2 Bedroom/2 Bath



The Breakers

1,978 sq. ft. — 2 Bedroom/3 Bath





Your desire to stay active can still be fulfilled, thanks to the expert care of Somerby Mount Pleasant's friendly professionals.

Assisted Living

A helping hand toward a happier life.

With the support of friends and family, aging successfully is rarely a solitary achievement. But sometimes, the need for more consistent help arises. Fortunately, your desire to stay active can still be fulfilled, thanks to the expert care of Somerby Mount Pleasant's friendly professionals.

Naturally, help is available daily, so your security is ensured. We also feature an emergency response system, daily check-ins, and a medication management service so you never have to worry about what to take or when.

A few other common ways our associates assist with daily activities include:

- ***Assistance with bathing and dressing as needed***
- ***Help getting in and out of bed***
- ***Help getting to meals and other activities***
- ***Additional assistance at mealtime if needed***
- ***Discreet personal care whenever needed***

For Assisted Living residents, we offer three floor plans – two studio/1-bath options and a 2-bedroom/1-bath layout.

Like all of our apartments, they feature an open, contemporary design along with modern appliances.

Starting at \$4,500

Apartment features may include:

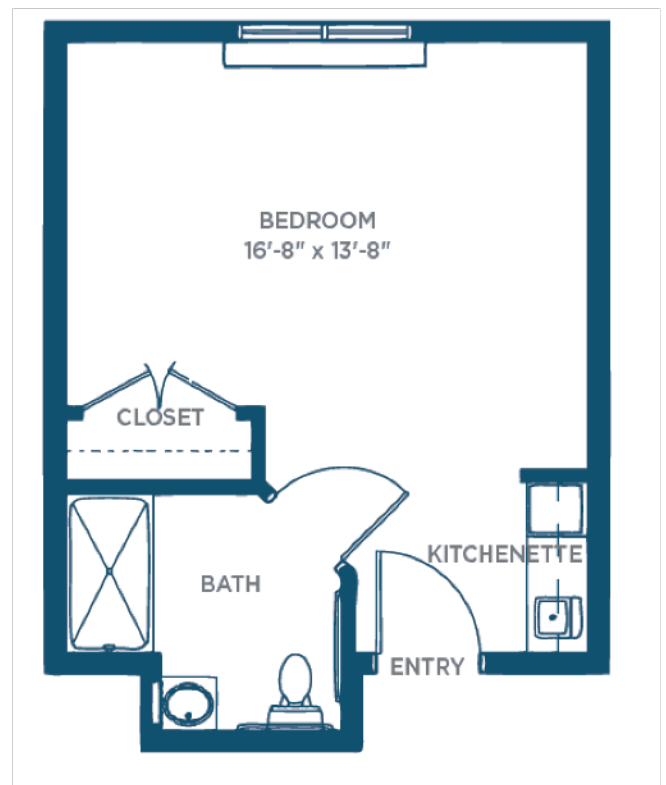
- *Individual thermostat controls*
- *Modern kitchens with full-size appliances*
- *Washers and dryers in each apartment*
- *Utilities (electricity, water, telephone)*
- *Housekeeping*
- *Trash service*
- *Pest control*
- *No property taxes*

Of course, they're pet-friendly too.

*Additional costs may apply.

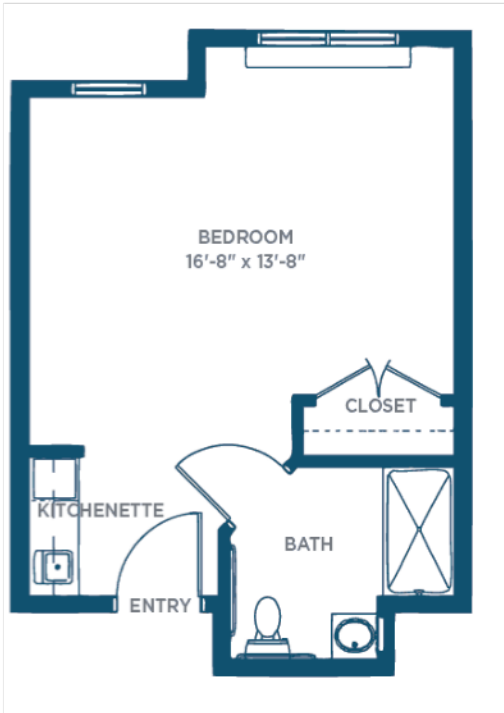
The Belle

385-471 sq. ft. — 1 Bedroom/1 Bath



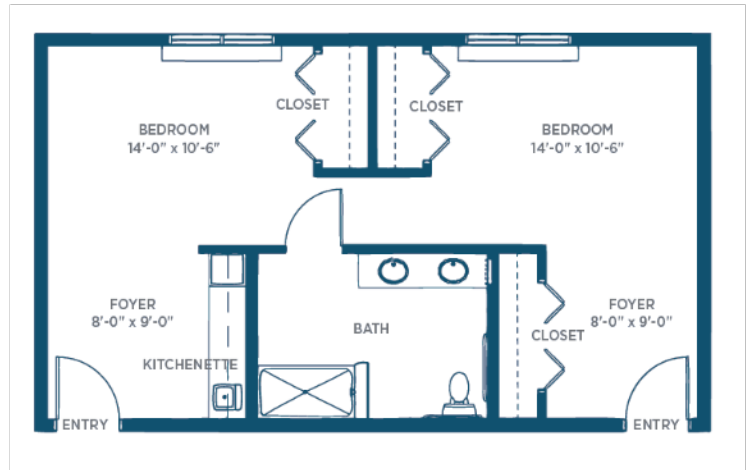
The Battery

407 sq. ft. — 1 Bedroom/1 Bath



The Carolina

737 sq. ft. — 2 Bedroom/1 Bath



Memory Care

Making the most of every day.

If you have a loved one experiencing cognitive issues, it's encouraging to know there's a place like Somerby Mount Pleasant. A place where every day is designed to be as positive and productive as possible. To help ensure that happens, every staff member on our Memory Care team undergoes specialized training, resulting in a combination of expert care and extraordinary empathy that both your loved one – and your entire family – will appreciate.

Some features of our Memory Care living include:

- ***Daily on-site support of trained staff***
- ***Nutrition management***
- ***Assistance, including extra social and one-and-one time, to help each resident experience as much joy as possible every single day***
- ***Emotional support using proven techniques individualized for each resident***
- ***Family-centered consultation and involvement to help achieve consistently better outcomes***



Memory Care apartments are available in two different 1-bedroom/1-bath floor plans.

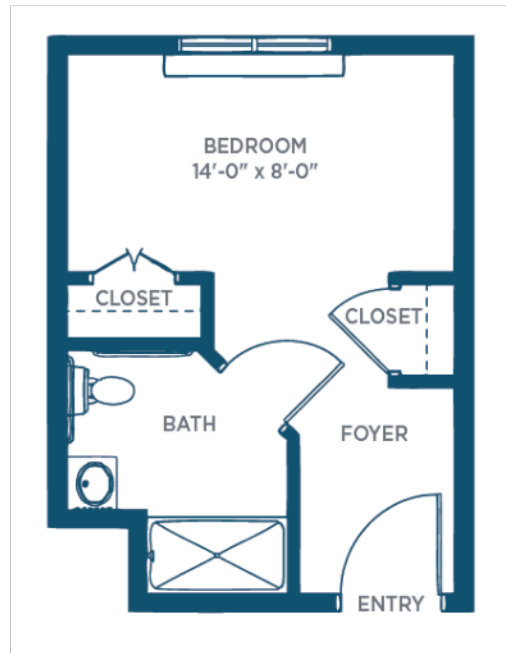
They are designed to facilitate the highest levels of safety and care.

Starting at \$4,200
All apartments include:

- Individual thermostat controls
- Modern kitchens with full-size appliances
- Washers and dryers in each apartment
- Utilities (electricity, water, telephone)
- Housekeeping
- Trash service
- Pest control
- No property taxes

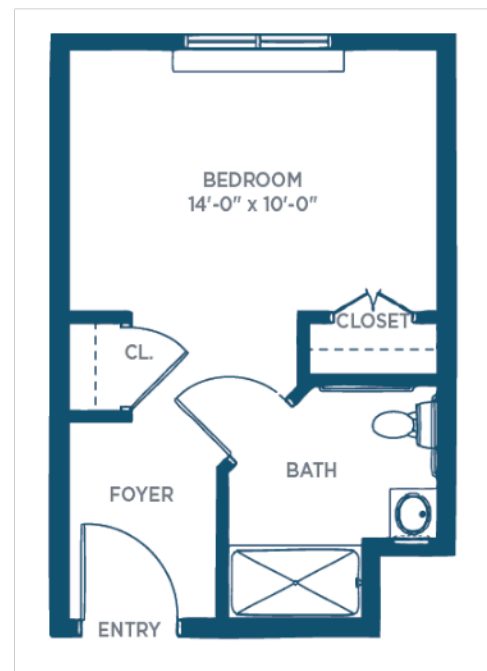
The Alhambra

301 sq. ft. — 1 Bedroom/1 Bath



The Boone

329 sq. ft. — 1 Bedroom/1 Bath



It's what's on the inside that counts.

When you're considering a senior living community, there are certain "must-haves." A choice of spacious apartments. A compassionate staff. Inviting meals you can look forward to. Outstanding care whenever care is needed.

At Somerby Mount Pleasant, we agree that these are, indeed, "must-haves." But as a Bridge Senior Living community, being great at those things is just the starting point, not the finish line. Because a great life demands more – much more – than simply being "good enough."

A feast for the body and the soul.



If food is the foundation of healthy living, mealtime may just be the foundation of a healthy community. After all, breaking bread with friends and family has been a principal way of building relationships, stirring the heart, and sharpening the mind throughout history.

At Somerby Mount Pleasant, we take the joy of mealtime seriously. The Château Restaurant was specifically created to provide both outstanding menu options and memorable moments with friends.

Professional chefs prepare the meals while white linens, seasonal delights, and daily menu changes accentuate the dining experience. A perfect place to enjoy fresh flavors with a healthy side of lively conversation.



Grow as a person, build stronger relationships, deepen your spirituality, expand your knowledge, and live with purpose.

All it takes is a single Spark.

Will you find outstanding amenities at Somerby Mount Pleasant? Of course. How about activities? More than space here will allow us to describe. But before we talk about those, let's talk about this: Discover Your Spark™.

Discover Your Spark was developed by Bridge Senior Living to help our residents rekindle old hobbies and ignite new passions — to understand what styles and types of activities they enjoy the most and then suggest new avenues of exploring those passions from all angles. So you not only stay active, but you also grow as a person, build stronger relationships, deepen your spirituality, expand your knowledge, and live with purpose.

Our residents truly love Discover Your Spark and we believe you will, too. We also think you'll love all the wonderful amenities and activities you'll find at Somerby Mount Pleasant, including:

- **Gated community with daily security**
- **Paved walking paths with LifeTrail® exercise stations**
- **Wide variety of social and exercise activities scheduled**
- **Spacious, open-concept apartment homes with one-, two-, and three-bedroom floor plans**
- **Chef-prepared meals featuring multiple entrée options at the Château Restaurant**



- **Daily hot breakfast buffet**
- **Sunday brunch buffet**
- **Library with computer center**
- **Creative arts studio**
- **Indoor heated aerobic exercise pool**
- **Barbershop and salon with hair styling and manicures (additional charges apply)**
- **Licensed nurse available daily**
- **Movie theater**
- **On-site fitness center with physical, speech, and occupational therapy services available**
- **Scenic walking trails**
- **Relaxing courtyards**
- **Scheduled transportation to off-site appointments and events**
- **Daily safety checks for all residents**
- **Medication management program**
- **In-residence doctor visits**

More than a touch of useful technology.

While it may be great fun to reminisce about days gone by, few of us would care to return to using party-line telephones or adjusting rabbit ears on the ole television.

At Somerby Mount Pleasant, we don't just welcome the march of technological progress – we join in the innovation parade.



From apps to virtual tours, here are a few of the ways we're making our residents' lives better via high-touch, high-tech solutions:

Bridge Senior Living App

Somerby Mount Pleasant is operated by Bridge Senior Living. So, naturally, we use the Bridge Senior Living App. Powered by LifeLoop, this app offers a central hub for residents, their families, friends, and staff to stay connected by sharing personalized activity schedules, photos, messages, and more.

Telehealth

The era of doctors making house calls is back – at least virtually. Not only do we offer technical support for your telehealth appointments, we even conduct appointments in the privacy of your room or apartment. It's convenient, safe, and thorough. Just what the doctor ordered.

Virtual Tours

While we'd love to have you visit Somerby Mount Pleasant in person, we know finding the time to do so may be a bit of a challenge. So instead of waiting for a hole in your schedule to open up, feel free to take a virtual tour. Our community has been digitally scanned and recreated in an easy-to-navigate 360-degree setting, so you can wander the halls, explore the rooms, and check out the grounds from the comfort of your own home.

Bridge Senior Living makes all the difference.

**BRIDGE
SENIOR
LIVING** Somerby Mount Pleasant is operated by Bridge Senior Living, recognized as one of the most innovative, senior living community management companies in the United States.

Beyond developing forward-thinking initiatives, such as the Bridge Senior Living App and Discover Your Spark™, Bridge Senior Living stands apart for its commitment to resident safety with the Bridge Safe program. Bridge Safe ensures that we have enhanced safety protocols in place to protect our residents and the resources to put those protocols into practice. From enhanced cleaning and guest screenings to daily check-ins to enhanced air filtration, Bridge Safe helps keep Somerby Mount Pleasant as happy a community as possible.



Bridge Senior Living continues to pursue improvements and innovations across all aspects of community life. We're proud to be part of their family and welcome the opportunity to tell you more about how Bridge makes life at Somerby Mount Pleasant better every day.



An honest discussion about financial matters.

At Somerby Mount Pleasant, we understand that the costs associated with moving into a senior living community are one of the main concerns for potential residents and their families.

So we're very upfront with our prices and invite you to contact one of our expert associates with any questions you may have.

Apartments at Somerby Mount Pleasant start at \$3,700 per month for Independent Living \$4,500 per month for Assisted Living, and \$4,200 per month

for Memory Care. These prices are inclusive of rent, meals, utilities, maintenance, and housekeeping. Plus, you don't have to pay any property or real estate taxes.

There are many options when it comes to financing a life at Somerby Mount Pleasant, including retirement savings, proceeds from selling your existing house, selling stocks and securities, etc. The options aren't quite limitless, but they are numerous. So again, we invite you to contact one of our experts to discuss matters further. And it truly will be a discussion and not a sales call. We promise.





What else would you like to know?

Seriously, we'd really love to hear from you and help you learn even more about what makes Somerby Mount Pleasant such a wonderful place. Yes, everyone here may be a bit biased, but we believe residents and staff alike would tell you that being a part of this community was the right decision for them.

Is it the right decision for you? That's not for us to say. After all, everyone's needs and situations are different. But you'll never know for sure unless you stop by and take a look around for yourself, which you are cordially invited to do.

To schedule your own visit at Somerby Mount Pleasant, please call 866-531-5123. We promise it will be a zero-pressure experience.

Take a tour, meet some residents, meet the staff, ask all the questions you like – even enjoy lunch if you time it right! Just give us a call and we'll make it happen.

To schedule a visit or for more information about Somerby Mount Pleasant, call 866-531-5123.

**Somerby Mount Pleasant
3100 Tradition Circle
Mount Pleasant, SC 29466**